



## s.85

full port 1/4" - 2"  
hot forged brass ball valve



### Quality

- 24h 100% seal test guaranteed
- Dual sealing system allows valve to be operated in either direction making installation easier
- No metal-to-metal moving parts
- Handle clearly shows ball position
- Silicone-free lubricant on all seals
- Chrome plated brass ball for longer life
- Handle stops on body to avoid stresses at stem

### Body

- Hot forged sand blasted, external nickel plated brass body and cap sealed with Loctite® or equivalent thread sealant
- Finest brass according to EN 12165 and EN 12164 (formerly DIN 17660 and UNI 5705-65) specifications

### Stem

- Blowout-proof nickel plated brass stem
- Pure PTFE adjustable packing gland and reinforced washer for lower torque and easy maintenance

### Sealing

- Pure PTFE self-lubricating seats with flexible-lip design

### Threads

- EN 10226-1, ISO 228 parallel female by female threads

### Flow

- Full port to DIN 3357 for maximum flow

### Handle

- Geomet® carbon steel handle with thick PVC dip coating. Handle coating offers both thermal and electrical protection
- **WARNING:** do not exceed reasonable temperature and/or electrical load

### Working pressure & temperature

- 40 Bar (600 PSI) non-shock cold working pressure
- -40°C (-40°F)/ +170°C (+350°F)
- **WARNING:** freezing of the fluid in the installation may severely damage the valve

### Options

- Stem extension
- T-handle
- Oval lockable handle
- AISI 430 stainless steel handle
- Patented locking device
- Stubby handle

### Upon request

- AISI 316 stainless steel ball and/or stem
- Glass filled PTFE seals
- Custom design

### PED directive

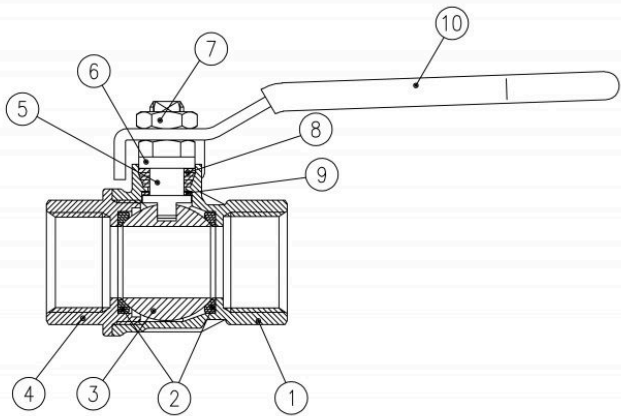
- According to 2014/68/UE module A: it cannot be used with dangerous gases in sizes larger than 25mm

### Approved by or in compliance with

- GOST-R (Russia)
- EAC -Declaration of conformity (Russia-Kazakhstan-Belarus)
- RoHS Compliant (EU)

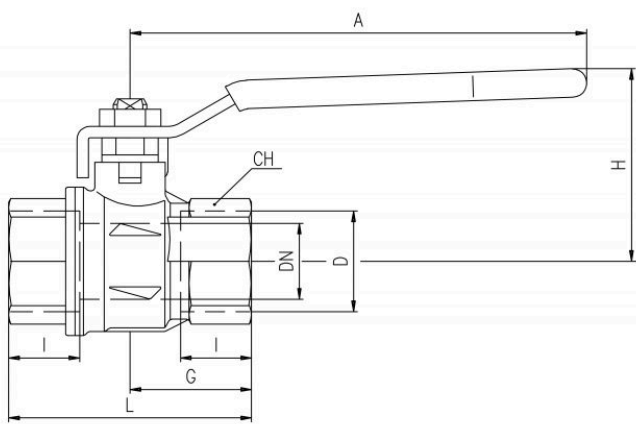
**NOTE:** approvals apply to specific configurations/sizes only.





	PART DESCRIPTION	Q.TY	MATERIAL
1	Nickel plated body (external treatment)	1	CW617N
2	Seat	2	PTFE
3	Chrome plated ball	1	CW617N
4	Nickel plated end-cap (external treatment)	1	CW617N
5	Nickel plated stem packing gland design	1	CW617N
6	Nickel plated gland nut	1	CW617N
7	Geomet® nut	1	CB4FF
8	Packing gland seal	1	PTFE
9	Washer	1	PTFE carbon filled 25%
10	Black PVC coated Geomet® steel handle	1	DD11

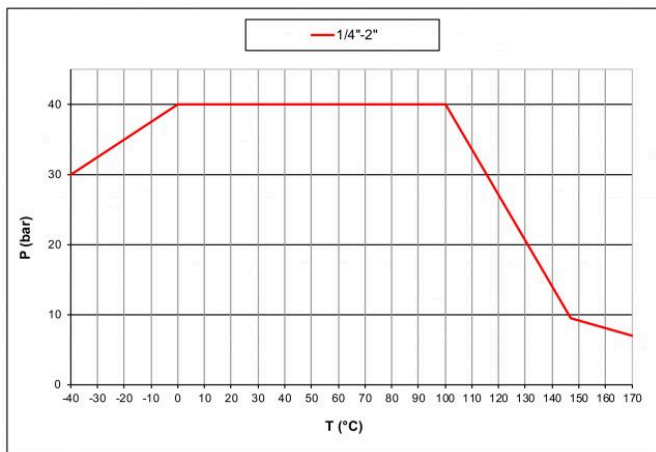
1.1/4"-2" hollow ball



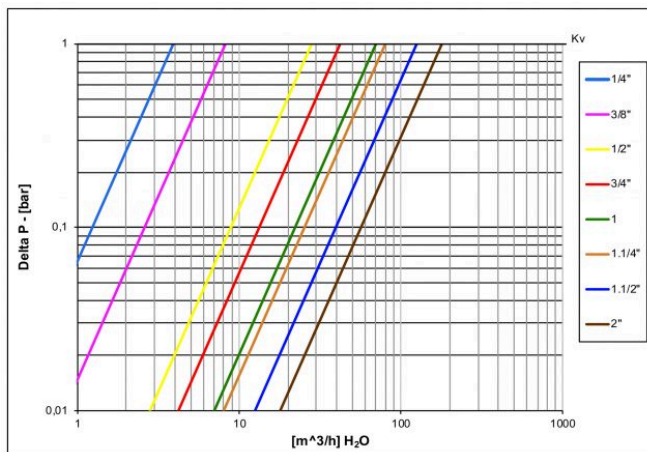
Code	S85B01	S85C01	S85D01	S85E01	S85F01	S85G01	S85H01	S85I01
D (inch)	1/4	3/8	1/2	3/4	1	1 1/4	1 1/2	2
DN(mm)	8	10	15	20	25	32	40	50
I (mm)	12	12	15.5	17	21	23	23	26.5
L (mm)	45	45	59	64	81	93	102	121
G (mm)	22.5	22.5	29.5	32	40.5	46.5	51	60.5
A (mm)	82	82	100	120	120	158	158	158
H (mm)	39.5	39.5	43	50.5	54.5	76	82	89
CH(mm)	20	20	25	31	40	49	54	68.5
Kv(m <sup>3</sup> /h)	3.9	8.2	28	42	70	80	125	179

Ball valves are marked CE on handle from 1.1/4" to 2" as follow:  
CE XXCODEXX Cat I-A

Pressure-temperature chart



Pressure drop chart



Ask for additional information on the whole range of **RUB** products and consult with your supplier for special applications.  
For complete disclaimer: [www.rubvalves.com/disclaimer](http://www.rubvalves.com/disclaimer)